



Meranti Millennium Equity Fund

Factsheet 30th November 2021



Strategy Description

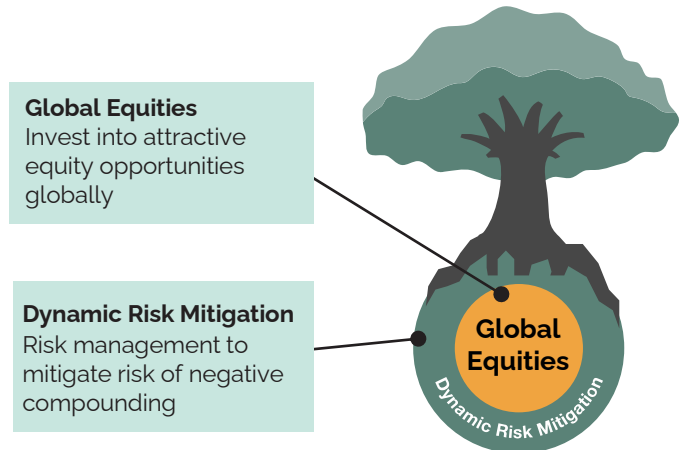
Meranti Millennium Equity Fund 'MME' seeks long-term high growth of the portfolio by investing opportunistically across global equity markets, while looking to mitigate risks during significant downturns. Instead of investing in flavour of the day concepts, the strategy focuses on key performance drivers that make sense and are backed by empirical research.

Key Features

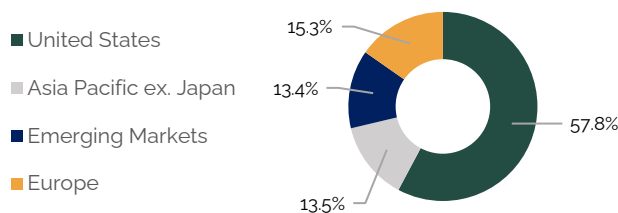
Dynamic Risk Mitigation: Financial crises are infrequent but inevitable. By managing risks in significant downturns, the strategy is designed to help investors endure systemic market shocks and continue to invest with confidence.

High Return Potential: Capture ongoing opportunities by taking advantage of market volatility to invest into attractive equity markets with high expected returns.

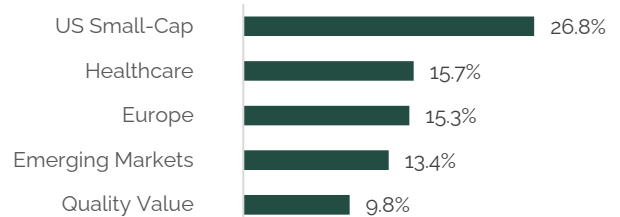
Active Strategy: Markets exhibit trends and cycles that create ongoing opportunities to invest in. Using Fundamental, Valuation, and Technical principles; we aim to invest into differentiated markets with favourable risk/reward that can deliver long-term outperformance.



Geographical Breakdown



Market Breakdown



Top 5 Fund Holdings

Fund Name
Blackrock World Healthscience Fund
Amundi European Equity Value Fund
SPDR S&P 600 Small Cap Value ETF
TT Emerging Market Unconstrained Fund
Granahan US SMID Select Fund

Portfolio Statistics*

	Portfolio
Volatility	16.0%
Average Month	1.1%
Best Month	13.6%
Worst Month	-9.9%
Positive Months	65%

*For illustrative purposes only. Calculated monthly from 1/8/2018 using a similarly managed composite portfolio fully invested net of fees. Performance since 1/4/2021 is based on actual monthly fund performance net of any management fees. Portfolio statistics may not be a good indication of actual performance and can differ meaningfully over shorter time periods.

Monthly Performance History

2021	Jan	Feb	Mar	Apr	May	Jun	Jul	Aug	Sep	Oct	Nov ¹	Dec	YTD ²
SGD A	-	-	-	2.30%	1.98%	0.76%	-5.35%	0.65%	-2.41%	2.58%	-5.30%		-5.03% ¹
USD A	-	-	-	-	-	-	-	0.65%	-2.34%	2.62%	-5.30%		-4.48% ¹
USD B	-	-	-	1.95%	1.62%	0.77%	-5.22%	0.80%	-2.20%	2.78%	-5.25%		-5.01% ¹

¹Manager's estimated return net of fees for each respective class. Actual return may differ and will be updated in the following month. Please reach out to your advisor to find out about the longer strategy track record. ²YTD refers to performance since inception.

IMPORTANT NOTICE & DISCLAIMERS

The information herein is given on a general basis without obligation and is strictly for information only. This publication is not an offer, solicitation, recommendation or advice to buy or sell any investment product, including any collective investment schemes or shares of companies mentioned within. Although every reasonable care has been taken to ensure the accuracy, timeliness and objectivity of the information contained in this publication, Finexis Asset Management Pte. Ltd. and its employees cannot be held liable for any errors, inaccuracies and/or omissions, howsoever caused, or for any decision or action taken based on views expressed or information in this publication. The value of shares values in the Fund and income there from (if any) may fall or rise. Past performance is not an indication of future performance. Investment in the Fund is subject to investment risks, including the possible loss of all or a substantial portion of the principal amount invested. Investors interested in the Fund should read the Private Placement Memorandum (PPM) and seek relevant professional advice before deciding whether to invest in the Fund. Should you choose not to seek such advice, you should consider whether the Fund is suitable for you.



Meranti Millennium Equity Fund

Factsheet 30th November 2021



Market & Portfolio Developments

Market Review

Equities declined in November. We remind investors not to be overly concerned about down months – equity markets have shown to be down 6 months in a year and still deliver double digit returns i.e. 2010, 2007, 1989. Global equities ended the month down 2.38%.

Main Contributors 'What did well?'

Our positions in **Quality Value equities** helped as they were more resilient in the midst of the broader market sell off. This contributor highlights the importance of diversification especially during market stress, and which is why we introduce various 'layers' of diversification within our portfolios.

Main Detractors 'What underperformed?'

Our Recovery positions – **US Small Caps, China 'A', Europe and Emerging Market equities** – gave up prior gains on concerns over the newer COVID-19 Omicron variant. As explained in our [latest market commentary](#), this reaction is a classic example of amplifying the bad and understating the good. On balance, our Recovery positions are expected to benefit from the broader economic growth which remains intact.

Portfolio Activity

Amid market volatility, the focus was on maintaining the integrity of our portfolio allocations

Market Outlook

With the continued regulatory crackdown by the Chinese government, and now fresh concerns over the new COVID-19 variant, financial markets are expected to remain volatile and unpredictable. Rather than trying to predict the short-term ups and down of the market, we continue to emphasize effective portfolio diversification across positions with better FVT (Fundamental, Valuation, Technical). Having differentiated and complementary positions that take turns to perform in the portfolio lead to a smoother journey and better outcome for our investors.

Fund Details

Item	Class A	Class B
Currency	USD, SGD	
ISIN (USD Class)	SGXZ35636000 (Distribution)	SGXZ56727852 (Accumulation)
ISIN (SGD Class)	SGXZ32206252 (Distribution)	SGXZ53567772 (Accumulation)
Projected Distribution ³	4% p.a.	-
Min. Subscription	USD 400,000 SGD 500,000	USD 40,000 SGD 50,000
Account Opening Fee ⁴ (One-time)	USD 3,000 SGD 4,000	USD 3,000 SGD 4,000
Min. Subsequent Subscription	USD 10,000 SGD 15,000	USD 10,000 SGD 15,000
Redemption Fees		
1st Year of Investment	-	3%
2nd Year of Investment	-	2%
3rd Year of Investment	-	1%
4th Year Onwards	-	0%
Management Fee	1.78%	0%
Performance Fee ⁵	0%	20%
Fund Name	Meranti Capital VCC Millennium Equity Fund	
Dealing Frequency	Monthly	
Base Currency	USD	
Inception Date	1 April 2021	
Fund Domicile	Singapore	
Investment Manager	Finexis Asset Management	
Fund Administrator	ASCENT Fund Services (Singapore)	
Custodian	Standard Chartered Bank	
Auditor	KPMG LLP	
Broker	Goldman Sachs (Asia) L.L.C.	
Legal Advisors	BTPLaw LLC	

³ Please note that the distributions (if any) may be declared semi-annually based on the Investment Manager's discretion. If distributions are made, such distributions are not a forecast, indication or projection of the future performance of the Fund. ⁴ Waiver of account opening fees for investors through the platforms

⁵ Charged on high water mark basis, with zero hurdle rate

About **Meranti**: The Meranti fund series is named after the Meranti tree, which is native to Singapore and the region. It is a canopy and emergent tree; providing shade from its place at the top layer of a rainforest where sunlight is plentiful. To reach such great heights, the trees have a strong and wide system of roots to help provide stability while also gathering more nutrients. Likewise, Meranti funds were developed around a Dynamic Risk Mitigation process so that investors can invest with confidence and harvest the full potential of capital growth through market cycles.

About **FAM**: Finexis Asset Management is a Capital Markets Services (CMS) licensed fund management company established in Singapore, focusing on bringing institutional capabilities to private clients. The boutique set-up ensures that we are flexible, responsive and proactive. We embrace the latest technology and constantly improve our processes to complement our investment solutions. Constant evolution to fulfil our investor's needs is ingrained in our beliefs.

For fund and sales related enquires please reach out to your finexis financial advisor representative or email us at customer.service@finexisam.com

IMPORTANT NOTICE & DISCLAIMERS

The information herein is given on a general basis without obligation and is strictly for information only. This publication is not an offer, solicitation, recommendation or advice to buy or sell any investment product, including any collective investment schemes or shares of companies mentioned within. Although every reasonable care has been taken to ensure the accuracy, timeliness and objectivity of the information contained in this publication, Finexis Asset Management Pte. Ltd. and its employees cannot be held liable for any errors, inaccuracies and/or omissions, howsoever caused, or for any decision or action taken based on views expressed or information in this publication. The value of shares values in the Fund and income there from (if any) may fall or rise. Past performance is not an indication of future performance. Investment in the Fund is subject to investment risks, including the possible loss of all or a substantial portion of the principal amount invested. Investors interested in the Fund should read the Private Placement Memorandum (PPM) and seek relevant professional advice before deciding whether to invest in the Fund. Should you choose not to seek such advice, you should consider whether the Fund is suitable for you.